

Heat Exchanger Tube Plugs

TP Series

Heat exchanger tube plugs seal the ends of leaking tubes, providing longer use of the heat exchanger. The uniform taper and the smooth surface finish assure positive sealing with a minimum installation force.

Sizes

Tube plugs are sized to fit tube diameters from 1/2 through 1 in. with standard wall thicknesses of

- 11 through 14 gage
- 12 through 17 gage
- 15 through 20 gage

based on Birmingham or Stubs gage system. Other sizes available on request.

Materials

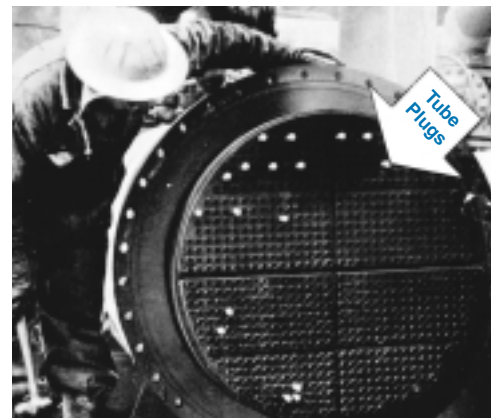
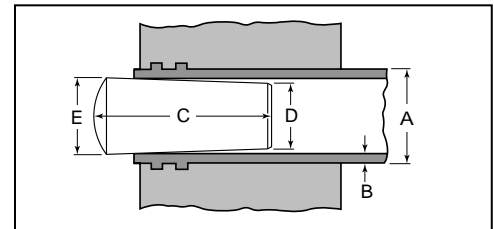
Tube plugs are available in a variety of materials for system compatibility.

- 360 brass/ASTM B16
- alloy 600/ASTM B166
- 316 stainless steel/ASTM A479
- alloy R-405/ASTM B164
- 1214 carbon steel/ASTM A108



Ordering Information / Dimensions

A Tube Outside Diameter in. (mm)	B ₁ Tube Wall Gage	B ₂ Tube Wall Thickness in. (mm)	Basic Ordering Number ^①	Dimensions, in. (mm)		
				C Length	D Diameter	E Diameter
1/2 (12.7)	11-14	0.083 to 0.120 (2.1 to 3.0)	-8TP-11-14	1.55 (39.4)	0.280 (7.1)	0.366 (9.3)
	15-20	0.035 to 0.072 (0.9 to 1.8)	-8TP-15-20	1.56 (39.6)	0.371 (9.4)	0.457 (11.6)
5/8 (15.9)	11-14	0.083 to 0.120 (2.1 to 3.0)	-10TP-11-14	1.57 (39.9)	0.405 (10.3)	0.491 (12.5)
	15-20	0.035 to 0.072 (0.9 to 1.8)	-10TP-15-20	1.58 (40.1)	0.496 (12.6)	0.582 (14.8)
3/4 (19.1)	11-14	0.083 to 0.120 (2.1 to 3.0)	-12TP-11-14	1.58 (40.1)	0.530 (13.5)	0.616 (15.6)
	12-17	0.058 to 0.109 (1.5 to 2.8)	-12TP-12-17	2.09 (53.1)	0.546 (13.9)	0.663 (16.8)
	15-20	0.035 to 0.072 (0.9 to 1.8)	-12TP-15-20	1.59 (40.4)	0.621 (15.8)	0.707 (18.0)
7/8 (22.2)	11-14	0.083 to 0.120 (2.1 to 3.0)	-14TP-11-14	1.60 (40.6)	0.650 (16.5)	0.736 (18.7)
	15-20	0.035 to 0.072 (0.9 to 1.8)	-14TP-15-20	1.62 (41.1)	0.746 (18.9)	0.832 (21.1)
1 (25.4)	11-14	0.083 to 0.120 (2.1 to 3.0)	-16TP-11-14	1.62 (41.1)	0.780 (19.8)	0.866 (22.0)
	12-17	0.058 to 0.109 (1.5 to 2.8)	-16TP-12-17	2.11 (53.6)	0.793 (20.1)	0.910 (23.1)
	15-20	0.035 to 0.072 (0.9 to 1.8)	-16TP-15-20	1.63 (41.4)	0.871 (22.1)	0.957 (24.3)



Tube plugs driven into leaking tubes just before heat exchanger goes back into operation.

^① For a complete Ordering Number, add **B** for brass, **SS** for 316 stainless steel, **INC** for Alloy 600, **M** for Alloy R-405, or **S** for carbon steel as a prefix to the Basic Ordering Number.
Example: B-14TP-15-20.

Dimensions, in inches (millimeters), are for reference only and are subject to change.